

Articulated Ruggedised Industrial Videoscope**2024 - 25**

**Take Your
Inspection
to New Levels**



Cutting edge technology Industrial Videoscopes / Fiberscopes for Inspection of :
Automotive. Aircraft. Aerospace. Process Industries.
Power Generation . Wind turbines. Boiler Inspections.
Construction. Security / Rescue.

Quality in Construction. Delivered.

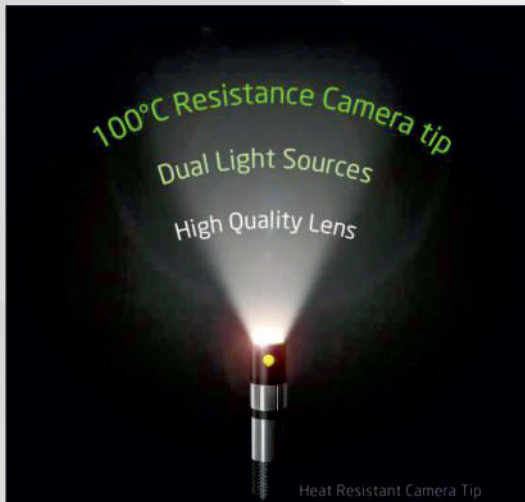
Industrial VideoScope | X750



Clarity | Sharpness | Performance

High Performance Industrial Video Borescope for demanding customers who need Articulated probes with **Flexibility** and Power on the go. X750 is lightweight, rugged, and provides **high-resolution images** and **advanced imaging functions** that allow workers to fulfill their tasks in **even the most challenging environments**.

The X750 High performance videoscopes are in association with MITCORP, Taiwan - used by worlds leading manufacturers, oil/gas sector, automotive, wind farms, Industrial MRO , amongst other users.



High Durability - Long Life

Temperature & Scratch Resistant
Tungsten Braided Probes

All X750 "Articulated Insertion Probes" are tungsten braided, **resistant to heat upto 100°C** and are **corrosion resistant**. Tungsten braided probes are also **scratch & abrasion resistant** and **waterproof upto 1 meter depth** for 30 minutes with an **IP67 environmental rating**.



Industrial VideoScope | X750



Clarity | Sharpness | Performance

X750 Controller Console Product Characteristics Designed for Portability & Versatility

Flexibility

Interchangeable probes improve productivity and give you the necessary flexibility for even the most complex applications.

One Handed Operation

The handy design, the shoulder straps, & the roll-up tubes of the X750 allow for one-handed operation.

Rechargeable Li-ion Batteries

2 x 3 hours operation per battery
Interchangeable



Interchangeable probe Options include 6.0mm, 3.9mm and 2.8mm dia probes in various configuration



Joystick Control for 360°
Probe Operation



1 Mains + 1 Spare Battery provided

Ergonomic :

- Lightweight Control Console : Only 1.2kg
- Shoulder strap & roll up tubes
- Interchangeable probes & batteries
- One-Handed operation
- Detachable 5" screen on module
- Custom Button on Joystick

Connectivity :

- Wi-Fi, HDMI, USB type C output supported
- Videoscope Mobile App for remote viewing
- GPS mark on photos

Additional Camera :

- Backside camera with GPS for capture of object being inspected , for records.
- Backside LED flashlight function

Report Generation Software - Productivity :

- SESSION/TAG Image Storage Settings
- Comprehensive Photo Annotation Function
- Report Assist Software
- New launched "Insight" report generation & GPS Mapping Software. (Optional)

True Sight :

- Super Resolution
- Fine Image Quality
- Advanced Imaging Functions

Industrial VideoScope | X750



Clarity | Sharpness | Performance

Backside Camera

The X750 control console includes a powerful Backside Camera with **2560x1440 pixels** giving you the ability to take photos from distances of objects being inspected and for record keeping for situation analysis & reporting.

The **built-in GPS** function allows you to **tag images** and map them out in our Insight software, for outdoor use.

As example, in large areas being inspected such as wind farms or transformer installation sites, allows categorisation and Indexing of difficult inspections



Best Image Viewing Experience

5" full-touch screen

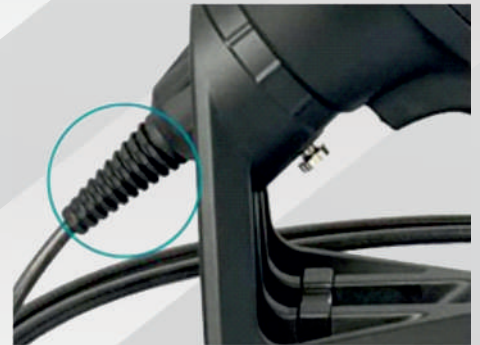
The X750 features a **5" high-resolution LCD touch-screen** that provides an excellent viewing experience

Manual Exposure

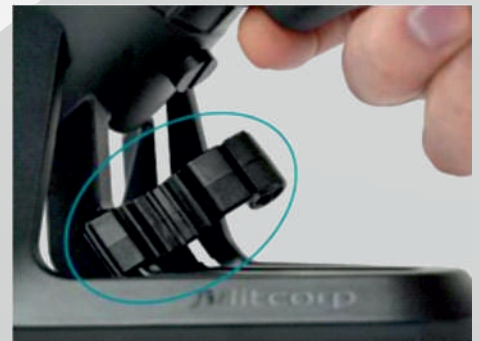
Adjust the exposure with only one click on the screen. **3 X Zoom** Directly on Touchscreen.



IP54 Water/Dust Proof



Enhanced tube strength release



Carrying tube / tip folder

Industrial VideoScope | X750



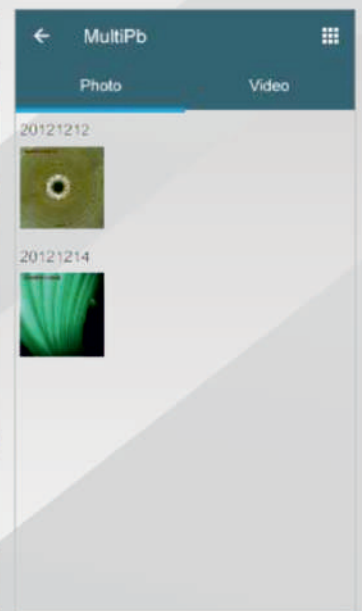
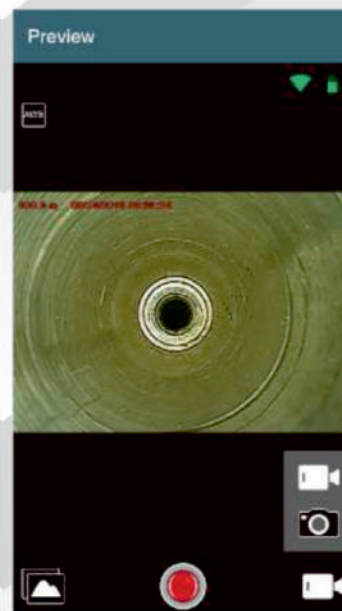
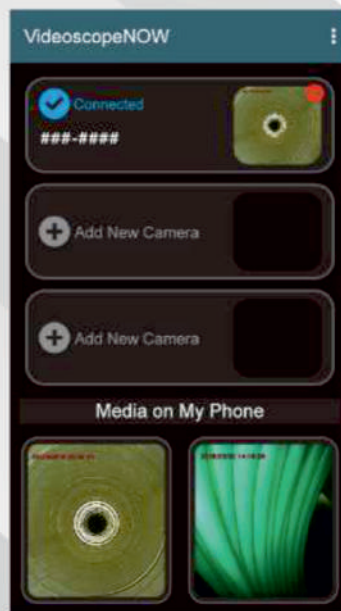
Clarity | Sharpness | Performance

Remote Connectivity
Benefit from Multi-Connectivity Options



1 View Images or videos directly on the X750 Console OR View + Control Via App

The X750 can link with mobile devices via the Videoscope Now Mobile App. The app lets you control the X750 remotely and download photos and videos directly onto your mobile device.



2 HDMI port for viewing
on external devices
SD Card for storage & transfer

USB C port for high speed transfer
of images & video to PC

3

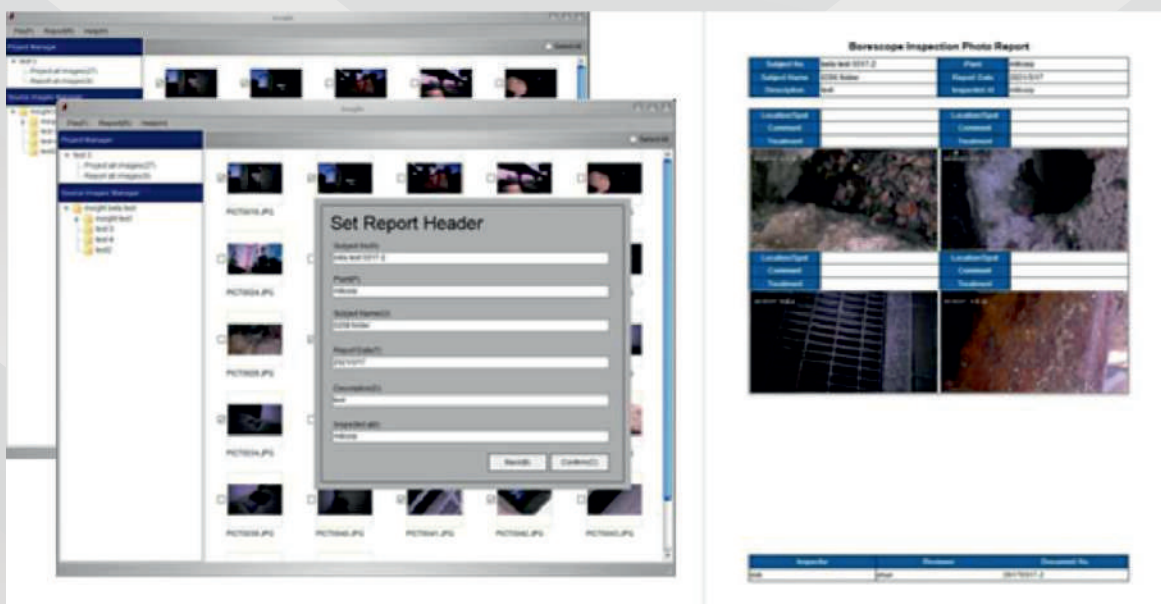
RESEARCH ARTICLE
REVIEW ARTICLE
BOOK REVIEW



From the Site to the office:

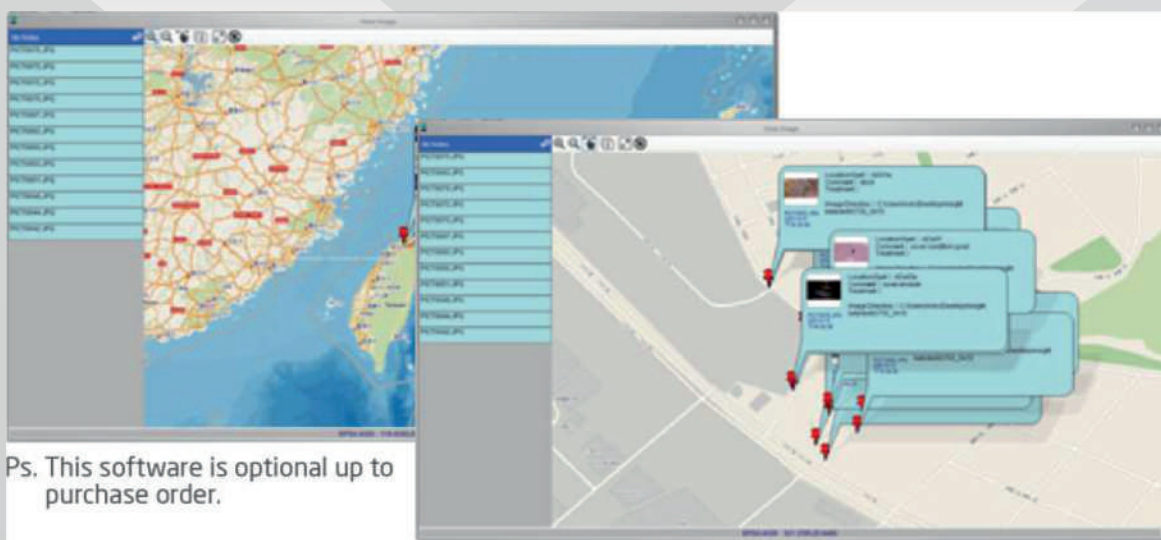
Improve your inspection workflow

Generate reports in just 4 steps. Review images and add comments within a well-integrated work process. It significantly improves the workflow and reduces the time needed to sort through large numbers of images.



Keep an overview of all inspected objects in large projects.

Images can be GPS tagged and laid out on a map. There, you can easily see different locations, the associated photos, and comments made to these photos.



Ps. This software is optional up to purchase order.

Industrial VideoScope | X750

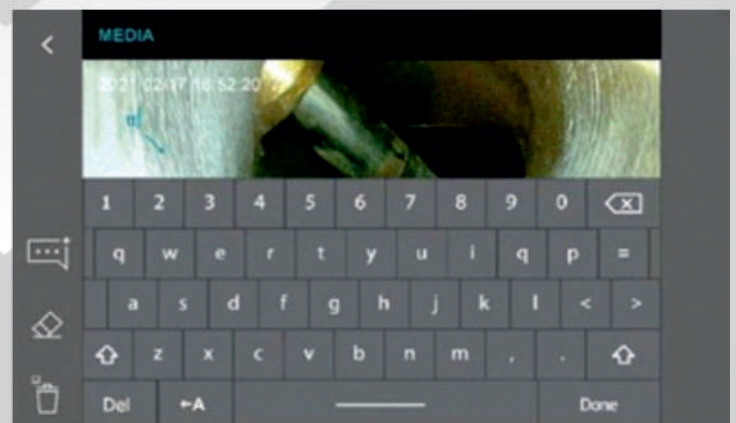
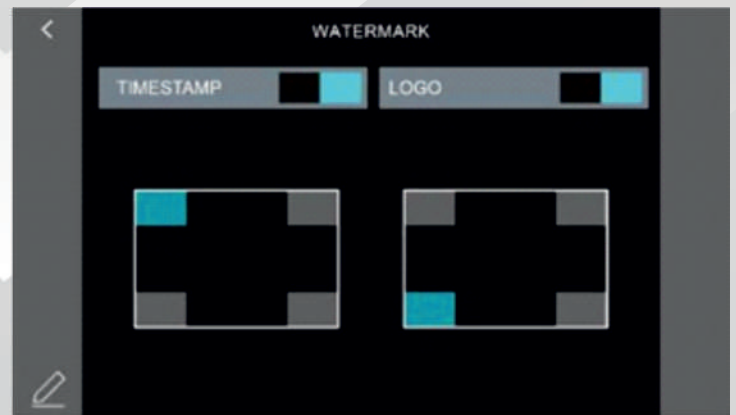
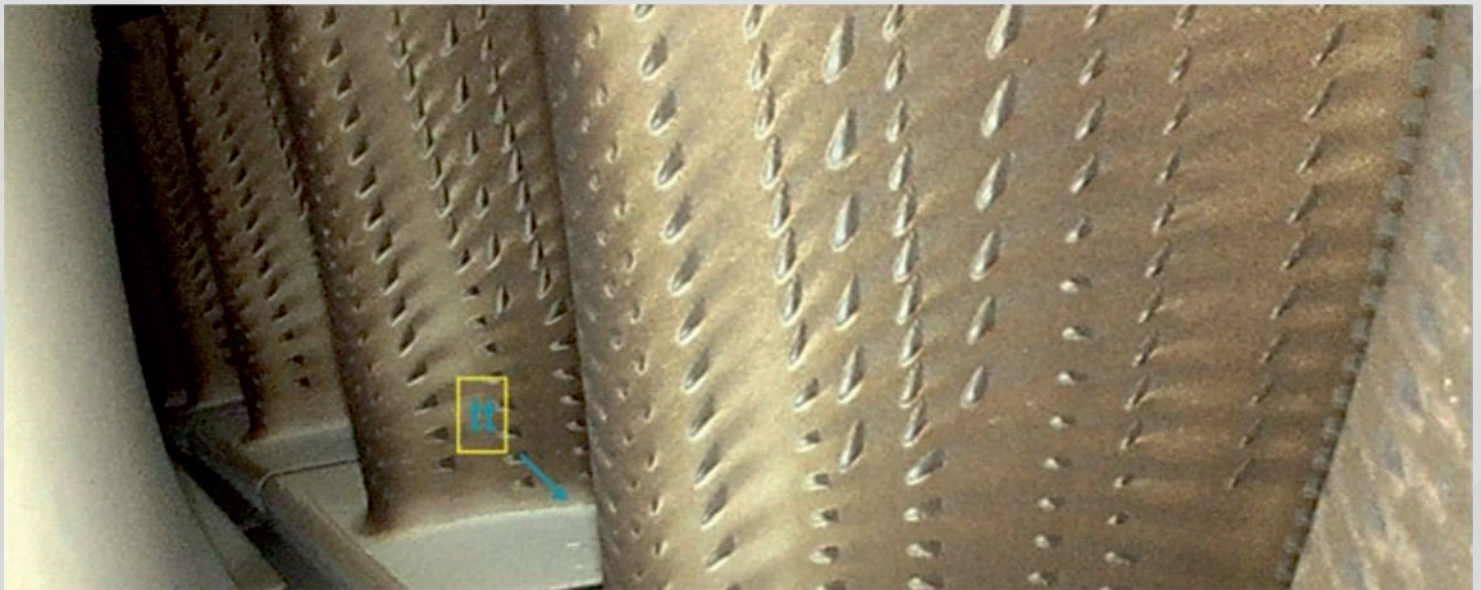


Clarity | Sharpness | Performance

Advanced File Management : Productivity

The X750's software includes a **file management system** that allows you to **sort photos and videos into session folders**. You can **write annotation notes** and **add** them to your images. A **compare function** enables you to compare the **live view image** to **gallery images**.

You can also include logos and watermarks as well as session tags. These functions make keeping track of all your inspections easy and convenient.



Industrial VideoScope | X750



Clarity | Sharpness | Performance

Specifications :

X750 Control Console Unit	
Dimension (LxWxH)	327.5mm x 152.8mm x 201.3mm
Weight	1230g (based on 2 m tungsten tube)
Water Resistance	IP54 (whole set assembled)
Display	5 inches / detachable touchscreen / 800x480 resolution
Function Buttons	Power; Reset (pin button)
I/O Port	Micro-SD memory card slot USB Type-C (power in /data out) Mini-HDMI (AV output)
Tip Temperature on screen	60°C / 80°C / 100°C - 3 Level Warning
Wi-Fi	802.11b/g/n
Mobile App	VideoscopeNow
LED Indicators	Green - working / fully recharged, Red - low power / recharging
Microphone	Built - in (on/off switch in settings menu)
Backside Light	LED
Backside Camera	2560x1440.JPG
GNSS	GPS, GLONASS Dual Mode
Joystick	
Articulation	Full ways mechanical control (4 way)
Function Buttons	4 Buttons: Brightness + / Brightness - / Snapshot /Record / Custom Self - Definition
Articulation Control	Joystick/ Lock - Stop & Go
Battery (One Piece)	4900 mAh replaceable Li - ion Battery
Working Time	3 Hours of Operation (with 2m / 3m ; decreases with longer probes)
Working Temperature	Battery powered : -10°C~45°C. Battery charging: 0°C~40°C
Battery / Charger Set included	
Dimension	117.5x76.8x69.7mm
Weight	Full Set (Batteries w/Charger Set): 393g; Battery 113g; Charger Set: 165g
Charging Time	6 Hours for 2 Batteries / 3 Hours for 1 Battery
LED Indicator	Red: Charging / green: Full Charged
# of Batteries included	2

Industrial VideoScope | X750



Clarity | Sharpness | Performance

True Sight : 360° Articulated Probes

Bending Angle upto 140°. Super Resolution & Fine Image Quality

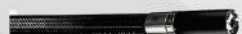
Probe options : Configure your X750 with probe meeting your application requirement



6.0mm Probe (front view)=Still image & video output resolution:2560x1440



3.9mm Probe (front view / Dual View)=Still image & video output resolution:1600x1600



2.8mm Probe (front view)=Still image & video output resolution:800x800

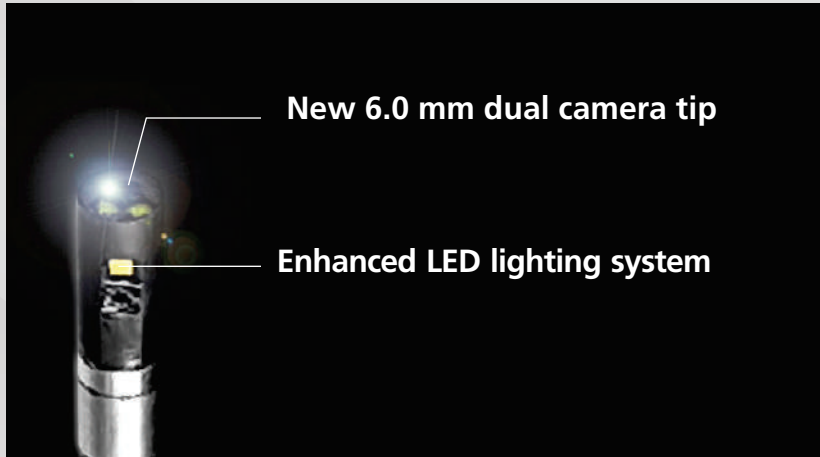
Models Options	60D4W-F_TU-M	60D4W-F_TU-F	60D4W-FS_TU-M	39D4W-F_TU-M	39D4W-FS_TU-M	28D4W-F_TU-M
Probe head diameter	6.0 mm			3.9 mm	3.9 mm	2.8 mm
Probe length	2 m / 3 m / 5 m / 7 m		2 m / 3 m / 5 m / 7 m / 10 m	1.5 m / 3 m	1.5 m / 3 m	1.5 m
Probe head length	19.3 mm		2 m / 3 m: 21.5 mm 5 m / 7 m / 10 m: 24.4 mm	13 mm	21.6 mm	10.1 mm
Direction of view	Front view		Dual View Front + Side	Front	Dual View Front+Side	Front
Illumination	Front LEDs		Front / side LEDs	Front LEDs	Front / Side LEDs	Front LEDs
Field of view (FOV)	90°		95°	120°		
Depth of Field (DOF)	10 mm~100 mm	25 mm~∞	2 m / 3 m: Front: 8 mm~∞ Side: 7 mm~∞ 5 m / 7 m / 10 m: Front: 8 mm~∞ Side: 5 mm~200 mm	5 mm~100 mm	5 mm~100 mm	3 mm~∞
Still image resolution (.jpg)	2560*1440 (S-HD)		(Dual) 2560*1440	1600*1600	(Dual) 1600*1600	800*800
Video resolution (.mov)	1920*1080		(Dual) 1920*1080	1600*1600	(Dual) 1600*1600	800*800
Articulation angle	2 m / 3 m: full ways ≥ 120° 5 m / 7 m / 10 m: full ways ≥ 80°			Full way >140°	Full way >120°	Full way >110°
Operating temperature	In air: -10~100°C ; In water: 10~30°C					In air : -10~80°C In water: 10~30°C
Temperature rating	100°C temperature resistant with 3 level warning at 60°C / 80°C / 100°C					
Probe head material	Stainless Steel					
Probe material	Tungsten braid					
Joystick console dimensions	(WxDxH) 139.4x193x84.2 mm (w/o SR and insert tubes)					
Joystick console buttons	Brightness+, Brightness-, snapshot / record					
Lock and move	Joystick / Unlock switch on console					
Dust and water proof / RH	Joystick console: IP54 ; Insert Tube: IP67 / 95%					
Liquid resistance	Operable when exposed to machine oil, light oil or 5% saline solution					

Industrial VideoScope | X750



Clarity | Sharpness | Performance

6.0mm Dual View Camera | 4 Way Articulating



Dual Front & Side Camera Dual LED Setup

Dual Front & side camera with light distribution crucial to avoid glare spots and reflections. For that reason, the side view camera has two LED light sources, one below and one above the camera lens, allowing for evenly distributed light in any situation.

Front Camera

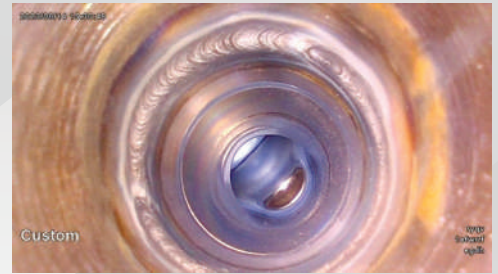
Side Camera



Clear Vision & Sharp Photos

Nothing is more important than to have a clear view and sharp images during an inspection. That is why the 3.9 mm dual view boasts two powerful cameras that will give you a perfect overview and leave no flaw undetected.

- HD resolution
- Wide FOV of 120°
- DOF of 5 mm~200 mm



IP67
waterproof



100°C
auto-shutdown



High-resolution images and videos

Great mobility. Outstanding flexibility. Stunning results.

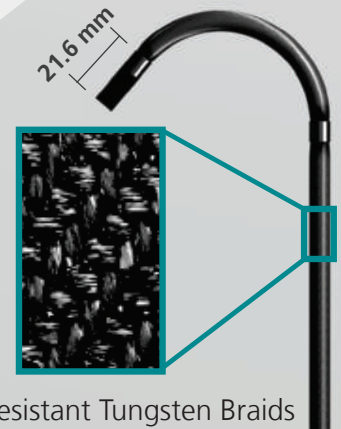
Rugged & Durability

- IP67 waterproof
- 100°C resist & High temperature warning
- Unyielding to scratches and corrosion

Sensitive mechanical control articulation

Full way articulation with lock design, mechanic wiring joystick brings you instant feedback and precise angle control.

21.5 mm short tip length and bending radius make your surrounding inspection job extremely comfortable and efficiently.



Scratch Resistant Tungsten Braids

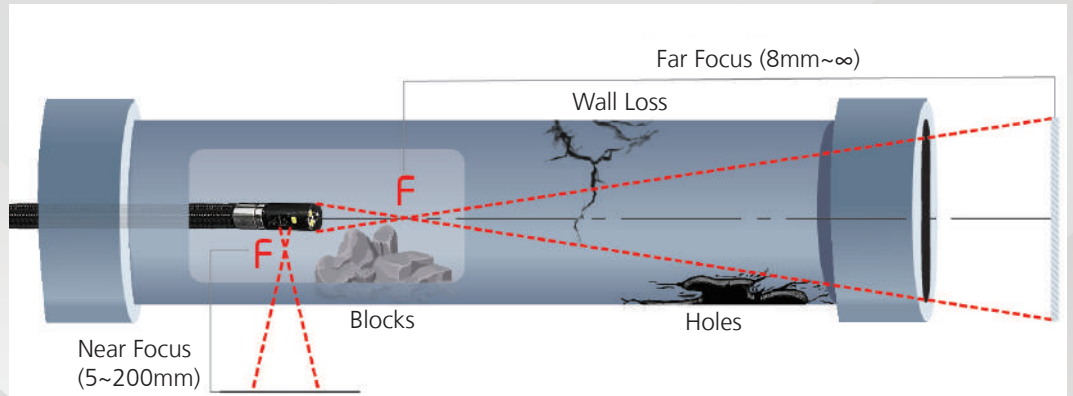
Industrial VideoScope | X750



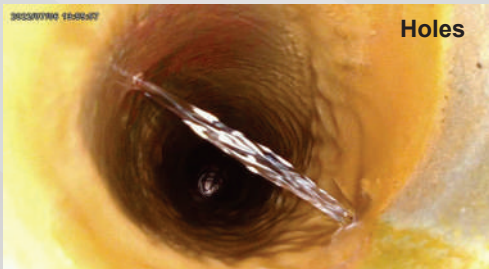
Clarity | Sharpness | Performance

6.0mm Dual View Camera | 4 Way Articulating

Optimized Probe Tip Optical Design



Long-length probe (5 m/7 m/10 m) tip's sophisticated DOF and FOV Optical design dedicated to tube inspection needs.



All length by demand



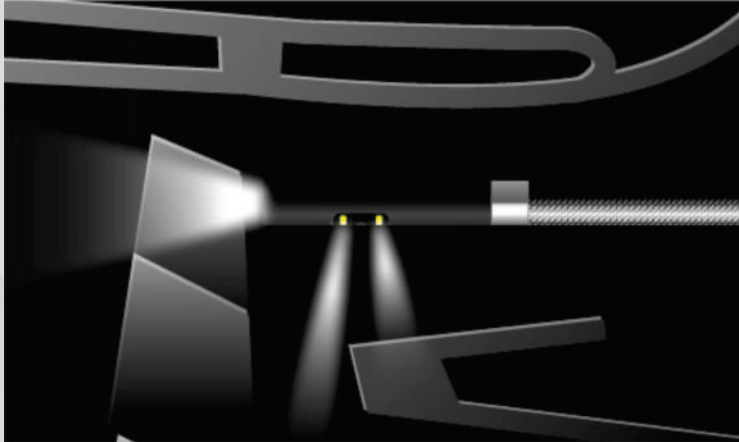
For all purposes inspection especially long tube objects like heat exchangers.

Industrial VideoScope | X750



Clarity | Sharpness | Performance

3.9mm Dual View Camera | 4 Way Articulating



Dual Front & Side Camera

Dual LED Setup

Dual Front & side camera with light distribution crucial to avoid glare spots and reflections. For that reason, the side view camera has two LED light sources, one below and one above the camera lens, allowing for evenly distributed light in any situation.

Front Camera

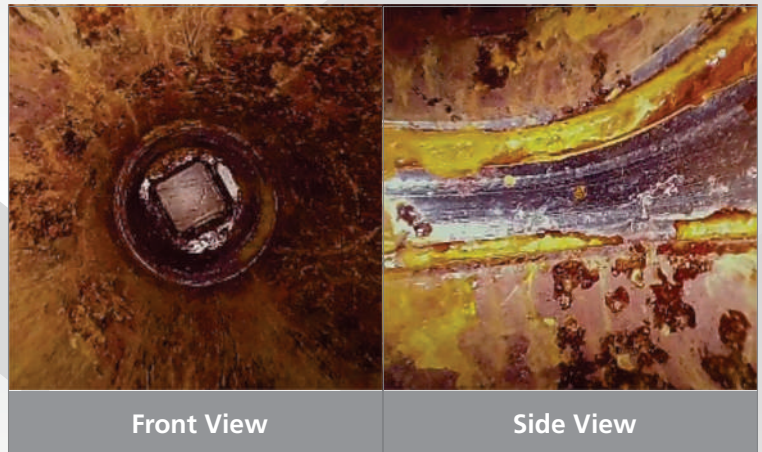
Side Camera



Clear Vision & Sharp Photos

Nothing is more important than to have a clear view and sharp images during an inspection. That is why the 3.9 mm dual view boasts two powerful cameras that will give you a perfect overview and leave no flaw undetected.

- HD resolution
- Wide FOV of 120° (Dual View Probe) / 140° (Front View Probe)
- DOF of 5 mm~100 mm



Front View

Side View

Maneuverability & Precision

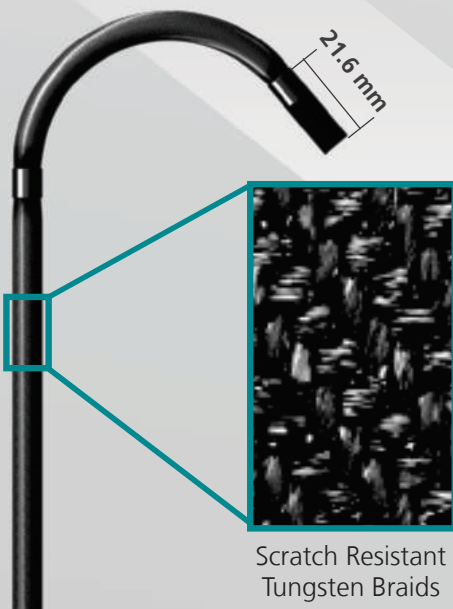
Our insertion probes are made to get to even the hardest-to-reach places, and the 3.9 mm dual view is no exception. It is highly flexible and small enough to reach your next inspection target with maximum efficiency and minimal effort.

- 3.9 mm probe head diameter
- 4 Way articulation
- Mechanical wiring (instant feedback & precise movements)
- Articulation up to 120° (or 140° for single front view probe)

Tungsten Reliability

The 3.9 mm dual view probe has a protective tungsten braided outer layer. The strength and density of tungsten extend the probe lifespan significantly and make it waterproof as well as heat and scratch-resistant.

- IP67 level waterproof and oil proof
- 100°C heat resistance
- Unyielding to scratches and corrosion



Industrial VideoScope | X750



Clarity | Sharpness | Performance

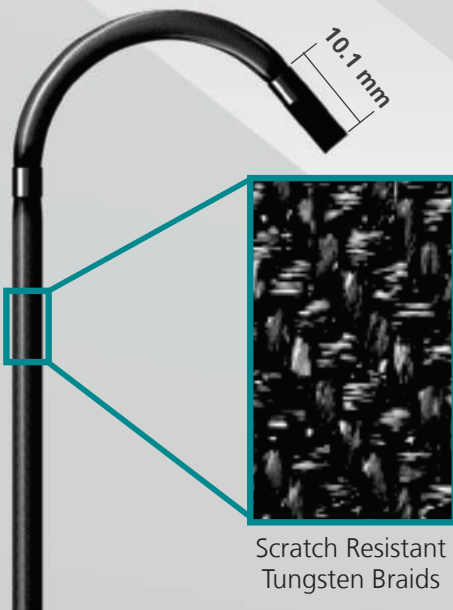
2.8mm digital front view 1.5mm Probe | 4 Way Articulating



Bright & Clear Images

Inspect the smallest of bores and pipes with 2.8 mm scope does not compromise between high image quality for a small diameter. Expect sharp & clear images. The bright LEDs let you see clearly in dark spaces, and the wide FOV offers a great overview. And no more blurry images, thanks to the 3 mm - ∞ DOF range!

- Resolution: 800 * 800
- FOV: 120
- DOF: 3 mm ~ ∞



Precise Movements:

A short distal-end and four-way articulation ensure precise movements! Thanks to the small diameter, the bending radius is also small and allows you to reach your inspection target even in confined spaces.

- 4 Way articulation
- 110° bending angle
- 10.1 mm probe head length

Tungsten Durability

The 2.8 mm dual view probe has a protective tungsten braided outer layer. The strength and density of tungsten extend the probe lifespan significantly and make it waterproof, heat and scratch-resistant.

- Tungsten-braided outer layer
- IP67 level waterproof and oil proof
- 80°C heat resistance
- Unyielding to scratches and corrosion

Industrial VideoScope | X750



Clarity | Sharpness | Performance

Each X750 Kit Contains :
X750 Control Console + Selected
Articulated Probe Option, with the
following accessories :

1. Lithium-ion Batteries: 2 No's

Quickly removable batteries; that provide 3 hours of operation each.

2. Probe Adapters: The X750 comes with a Side View and Dual View Mirror adapter as well as a Pin adapter for measurements. (Only for 6.0mm probe)

3. Accessory Box:

A variety of different power adapters are available to recharge your X750. A mini-HDMI cable, EMI core*4(detachable for USB or HOMI cable's connector ends), a USB Type-C cable, a memory card, and a cleaning kit are also part of the package.

4. Rigid Sleeve:

Rigid sleeves are available for 6.0mm and 3.9mm probes. Each rigid sleeve comes with an additional extender for the sleeve.

5. Neck Strap:

The X750 comes with a detachable neck strap that can be easily attached or detached.

6. Hard Carry Case:

The hard carry case is dust, and waterproof. It is rugged and ensures that your X750 stays safe during your travel or movement of equipment within your industrial areas.

Image Measurement Software & PC
Software for remote viewing through
USB: is included as part of package.





**Professional
Grade
Products**

**Best In Class
Warranty
Programmes**

**Product &
Service
Training**

Regd. Office:
Asian Contec Ltd.
Asian Centre, B-28, Okhla Industrial Area, Phase-1,
New Delhi -110020, India.

Contact Nos.:
Tel : +91-11-41860000 (100 Lines),
Direct Sales Helpline : +91-11-41406926
Web : www.stanlay.in www.stanlay.com
email: sales@stanlay.com

Works :
Asian Contec Ltd. 13/7,
Mathura road, Faridabad, Haryana, India

Regional Offices :
• Mumbai • Bengaluru • Hyderabad • Vadodara
• Lucknow • Patna • Bhubaneshwar • Guwahati

Sales Channel Locations: • Chennai

Catalogue Version : ST/X750/2024-25

www.stanlay.in

**Quality
Management
System**

ISO 9001: 2015

1-QSC202101102

